

# KUPU

[www.kupuled.com](http://www.kupuled.com)

2025-2026

## kupu

Address: No. 21-1 Yongchang Road, Huacheng Street, Huadu District, Guangzhou

Tel: 020-36933476 / 36963478

Tiktok: ALT1349

Website: [www.kupuled.com](http://www.kupuled.com)

E-mail: [kp@kupuled.com](mailto:kp@kupuled.com)



Tiktok

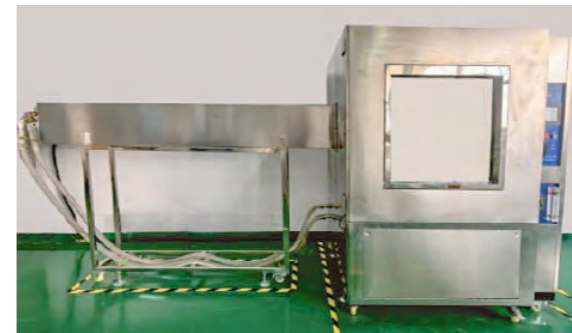


GZAILITELED&KUPU, established in Guangzhou, China, is a comprehensive energy-saving technology enterprise that integrates the research and development, production, sales, and service of LED outdoor landscape lighting, cultural and tourism lighting, bridge and building lighting products. The company has been deeply involved in the field of lighting for more than 17 years, with outdoor high-power LED lighting technology as its core feature, focusing on providing professional and customized light environment solutions for global customers.

Our company's business covers OEM/ODM manufacturing and engineering project support. Our products are widely used in outdoor facilities, large-scale real estate, commercial advertising, tourist attractions, villa lighting and other fields. Our products are also exported to international markets such as the Middle East, Europe and America. Our main products include LED floodlights, wall washers, ambient lighting, interactive lighting equipment, and intelligent lighting control APP systems, with a power coverage of 1W-1260W. We are one of the enterprises in the industry with the most complete series of outdoor LED floodlights and the largest power span.

Relying on its independent research and development system, the company has mastered core technologies such as optical lens design, external structure development, PCB circuit optimization, and intelligent control systems, and holds more than 40 patent rights. With the research and development concept of "simplicity, comfort, softness, and energy saving", we have created a modular narrow beam imaging technology to achieve precise light control and efficient energy saving. Our products have passed ISO9001 quality management system certification and obtained authoritative qualifications such as CCC, CE, ROHS, CQCMA at home and abroad, and our quality is recognized by the industry.

Elite Optoelectronics always takes "light quality" as its foundation and is committed to creating the ultimate light environment. With our full industry chain R&D and manufacturing capabilities and global service network, we look forward to working together with our partners to empower urban lighting aesthetics with innovative technology and jointly build a green and smart lighting future.



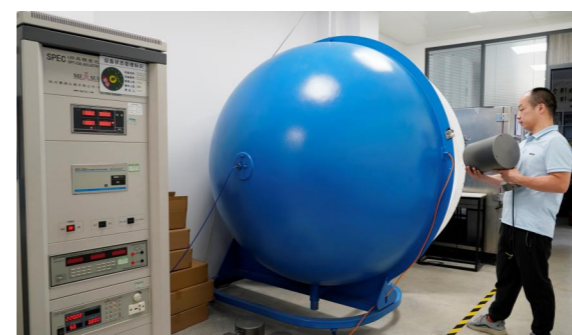
IP Waterproof Test



Reflow Soldering Equipment



Temperature Cycling Test



Integrating Sphere



SMT Equipment



Distributed Testing



Automated Sealing Equipment

# Qualification and Honor

# Patent Certificate



## Product Characteristics ▾

### -Simplicity

Simplicity but not simplicity, simplicity but not casualness, integrating mature design concepts through the simplest design  
Connecting lighting with everyday life!

### -Comfort

The product has a simple and atmospheric appearance, seamlessly integrating with the building walls to create a perfect landscape!

### -Soft

Natural, healthy, and comfortable lighting that complements the environment. defends against light pollution, and enhances the spatial beauty of the building!

∠ 1°



∠ 2.5°



∠ 3°



∠ 6°



∠ 15°



∠ 1×60°



Street Lamp Series A



**KUPU-LD30-1A**  
30W  
P01



**KUPU-LD50-1A**  
50W  
P02



**KUPU-LD100-2A**  
100W  
P03



**KUPU-LD150-2A**  
150W  
P04



**KUPU-LD200-4A**  
200W  
P05



**KUPU-LD240-4A**  
240W  
P06



**KUPU-LD300-4A**  
300W  
P07

Street Lamp B



**KUPU-LD30B**  
30W  
P08



**KUPU-LD50B**  
50W  
P09



**KUPU-LD100B**  
150W  
P10



**KUPU-LD150B**  
150W  
P11



**KUPU-LD200B**  
200W  
P12



**KUPU-LD240B**  
240W  
P13

Solar Street Light Series



**KUPU-TER-F40**  
40W  
P14



**KUPU-TER-F60**  
60W  
P15



**KUPU-TER-F80**  
80W  
P16



**KUPU-TER-Y40**  
40W  
P17



**KUPU-TER-Y50**  
50W  
P18



**KUPU-TER-Y60**  
60W  
P19



**KUPU-TER-Y80**  
80W  
P20

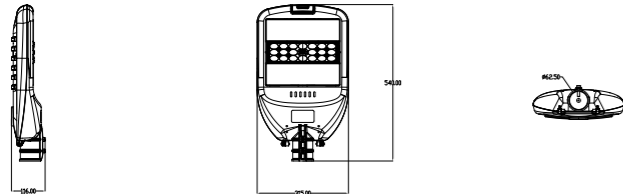
kupu

# kupu

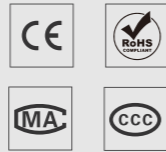


## Street Lamp Series A-LD30-1A

Product Size

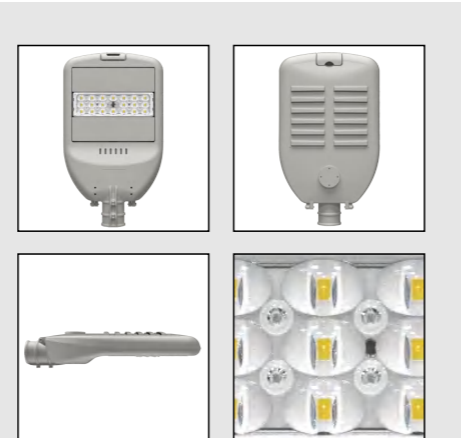


### Technical features



### Technical Data

Item	Street Lamp
Wattage	30W
Light source	7070
Wattage	
IK Rating	IP66
Input voltage	AC110-220V
Cable gland	
Optics	150x75°
Material	ADC12 die-cast aluminum + high borosilicate tempered glass lens
Total weight	3.4 KG
Package dimensions	L330xW145xH555

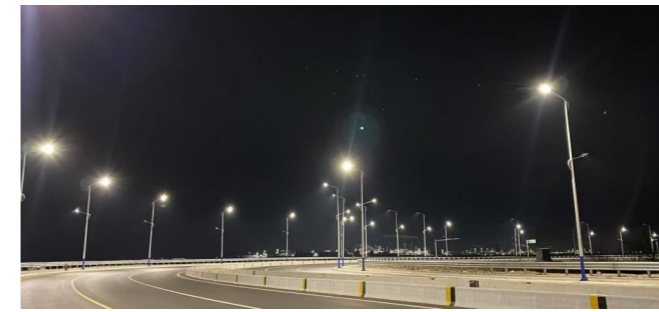
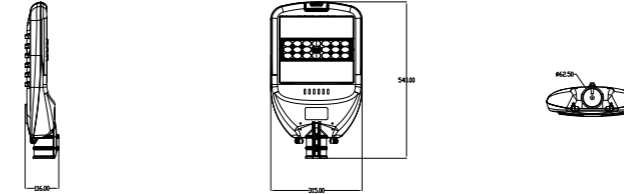


# kupu



## Street Lamp Series A-LD50-1A

Product Size

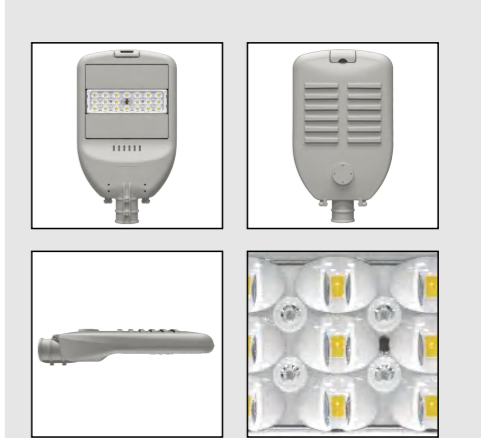


### Technical features



### Technical Data

Item	Street Lamp
Wattage	50W
Light source	7070
Wattage	
IK Rating	IP66
Input voltage	AC110-220V
Cable gland	
Optics	150x75°
Material	ADC12 die-cast aluminum + high borosilicate tempered glass lens
Total weight	3.4 KG
Package dimensions	L330xW145xH555

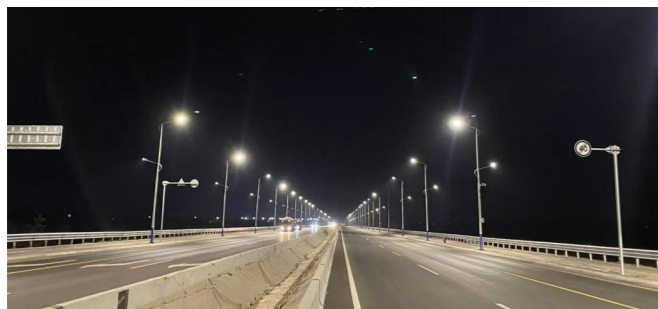
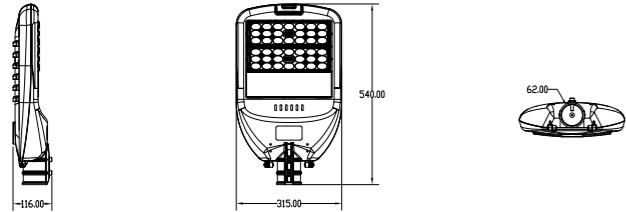


kupu



# Street Lamp Series A-LD100-2A

Product Size

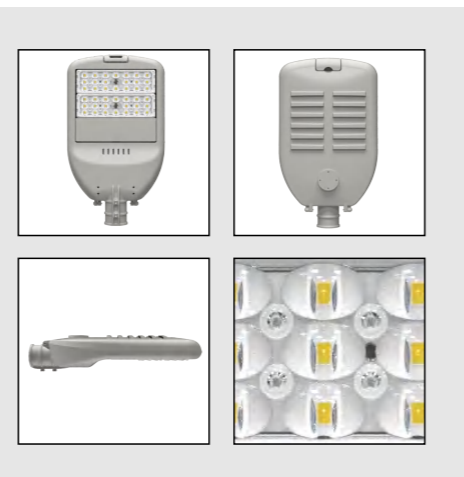


### Technical features



### Technical Data

Item	Street Lamp
Wattage	100W
Light source	7070
Wattage	
IK Rating	IP66
Input voltage	AC110-220V
Cable gland	
Optics	150x75°
Material	ADC12 die-cast aluminum + high borosilicate tempered glass lens
Total weight	3.9KG
Package dimensions	L330xW145xH555

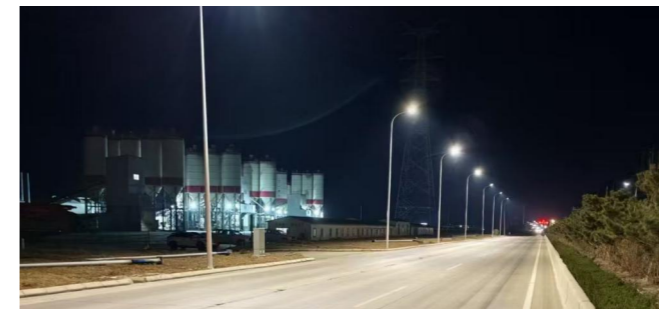
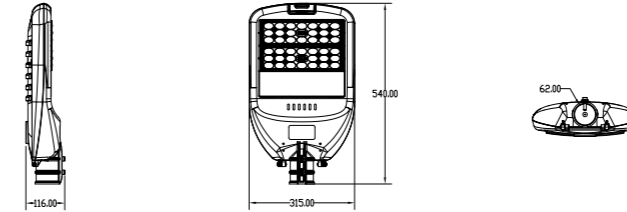


kupu



# Street Lamp Series A-LD150-2A

Product Size



### Technical features



### Technical Data

Item	Street Lamp
Wattage	150W
Light source	7070
Wattage	
IK Rating	IP66
Input voltage	AC110-220V
Cable gland	
Optics	150x75°
Material	ADC12 die-cast aluminum + high borosilicate tempered glass lens
Total weight	4.5KG
Package dimensions	L330xW145xH555

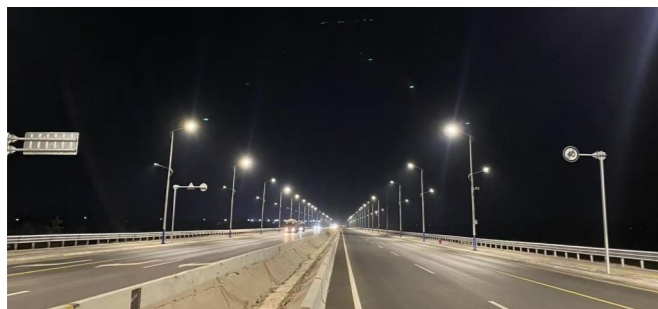
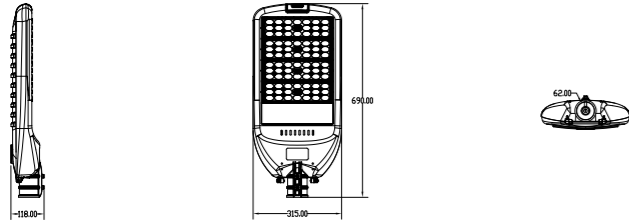


kupu

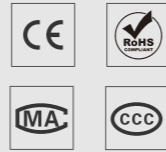


## Street Lamp Series A-LD200-4A

Product Size

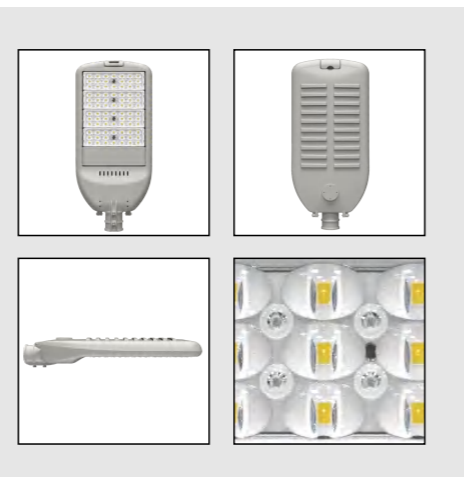


### Technical features



### Technical Data

Item	Street Lamp
Wattage	200W
Light source	7070
Wattage	
IK Rating	IP66
Input voltage	AC110-220V
Cable gland	
Optics	150x75°
Material	ADC12 die-cast aluminum + high borosilicate tempered glass lens
Total weight	7.7KG
Package dimensions	L330xW150xH705

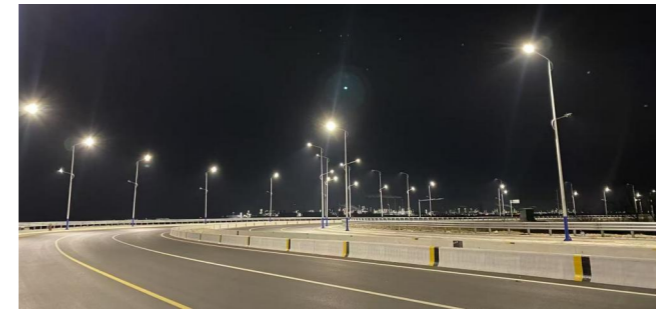
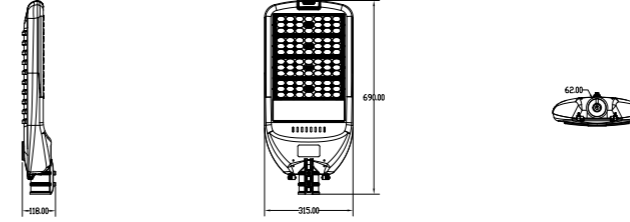


kupu



## Street Lamp Series A-LD240-4A

Product Size

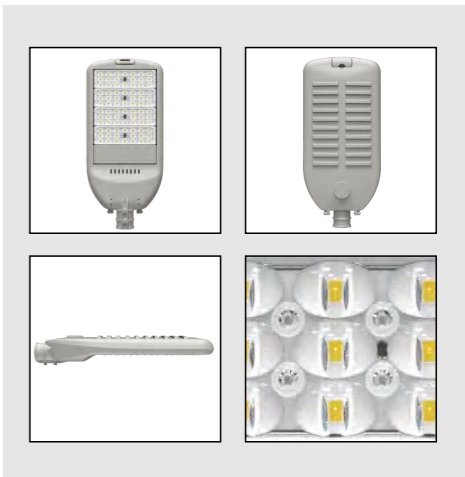


### Technical features



### Technical Data

Item	Street Lamp
Wattage	240W
Light source	7070
Wattage	
IK Rating	IP66
Input voltage	AC110-220V
Cable gland	
Optics	150x75°
Material	ADC12 die-cast aluminum + high borosilicate tempered glass lens
Total weight	7.7KG
Package dimensions	L330xW150xH705

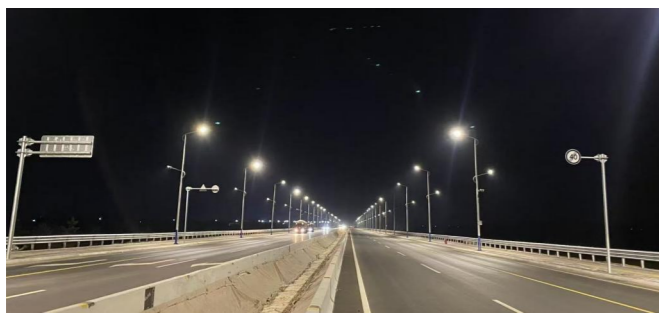
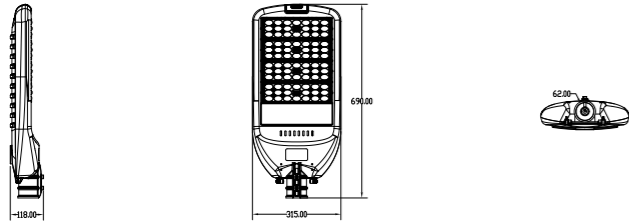


kupu

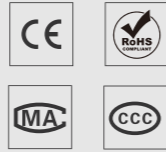


# Street Lamp Series A-LD300-4A

Product Size



### Technical features



### Technical Data

Item	Street Lamp
Wattage	300W
Light source	7070
Wattage	
IK Rating	IP66
Input voltage	AC110-220V
Cable gland	
Optics	150x75°
Material	ADC12 die-cast aluminum + high borosilicate tempered glass lens
Total weight	7.7KG
Package dimensions	L330xW150xH705

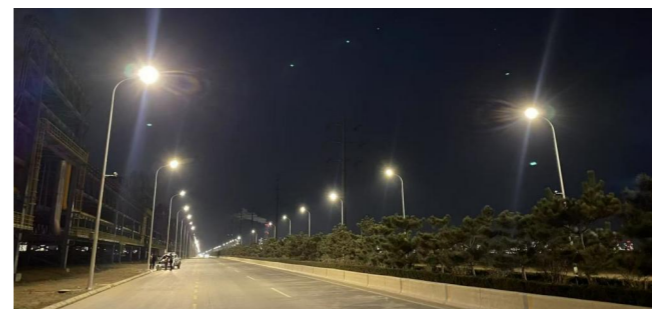
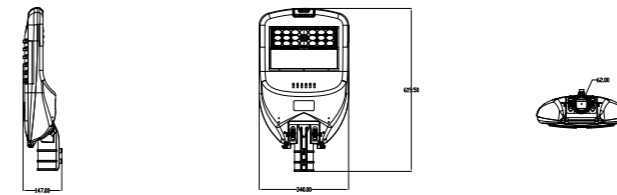


kupu

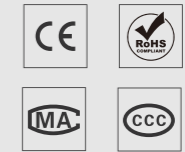


# Street Lamp Series B-LD30B

Product Size



### Technical features



### Technical Data

Item	Street Lamp
Wattage	30W
Light source	7070
Wattage	
IK Rating	IP66
Input voltage	AC110-220V
Cable gland	
Optics	150x75°
Material	ADC12 die-cast aluminum + high borosilicate tempered glass lens
Total weight	3.4 KG
Package dimensions	L355xW180xH635

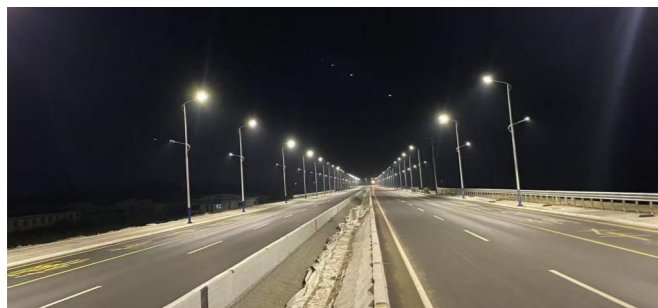
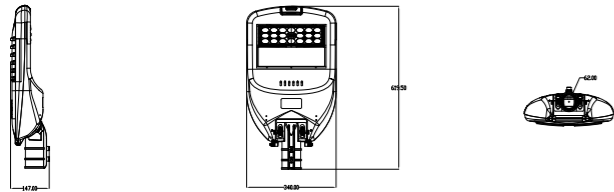


kupu

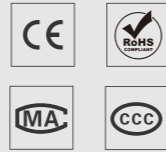


## Street Lamp Series B-LD50B

Product Size

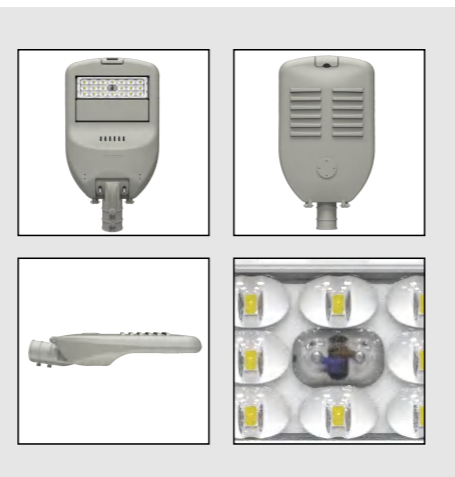


### Technical features



### Technical Data

Item	Street Lamp
Wattage	50W
Light source	7070
Wattage	
IK Rating	IP66
Input voltage	AC110-220V
Cable gland	
Optics	150x75°
Material	ADC12 die-cast aluminum + high borosilicate tempered glass lens
Total weight	3.4 KG
Package dimensions	L355xW180xH635

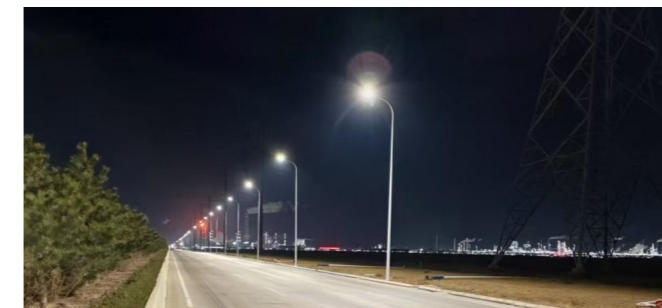
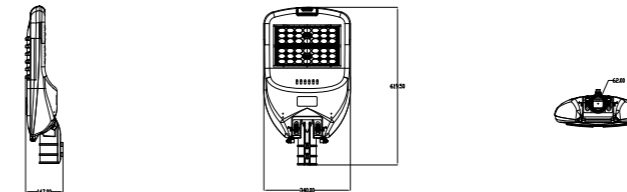


kupu



## Street Lamp Series B-LD100B

Product Size

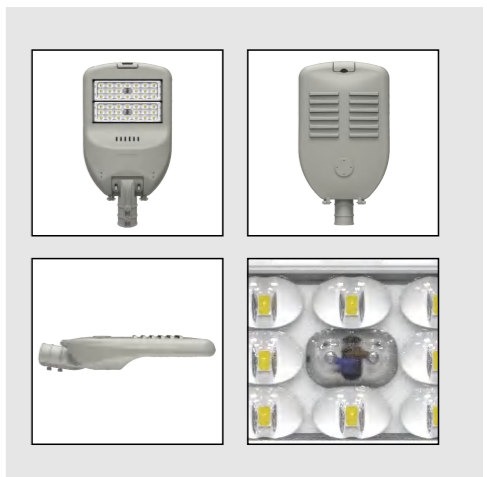


### Technical features



### Technical Data

Item	Street Lamp
Wattage	100W
Light source	7070
Wattage	
IK Rating	IP66
Input voltage	AC110-220V
Cable gland	
Optics	150x75°
Material	ADC12 die-cast aluminum + high borosilicate tempered glass lens
Total weight	4.3 KG
Package dimensions	L355xW180xH635

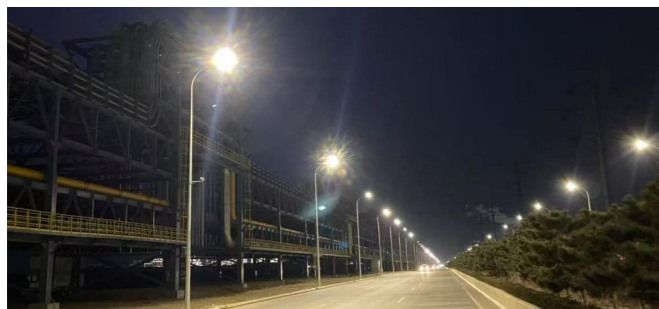
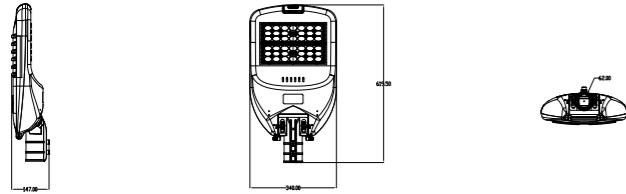


kupu



# Street Lamp Series B-LD150B

Product Size

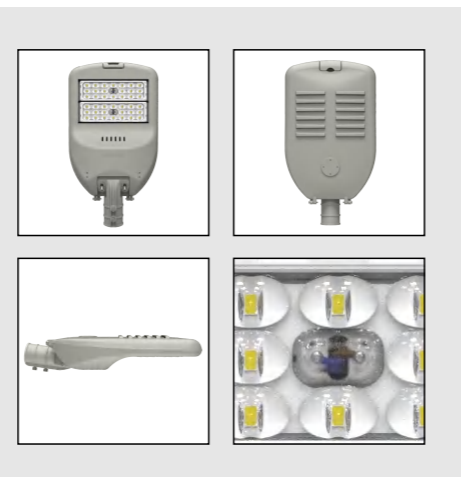


### Technical features



### Technical Data

Item	Street Lamp
Wattage	150W
Light source	7070
Wattage	
IK Rating	IP66
Input voltage	AC110-220V
Cable gland	
Optics	150x75°
Material	ADC12 die-cast aluminum + high borosilicate tempered glass lens
Total weight	4.3 KG
Package dimensions	L355xW180xH635

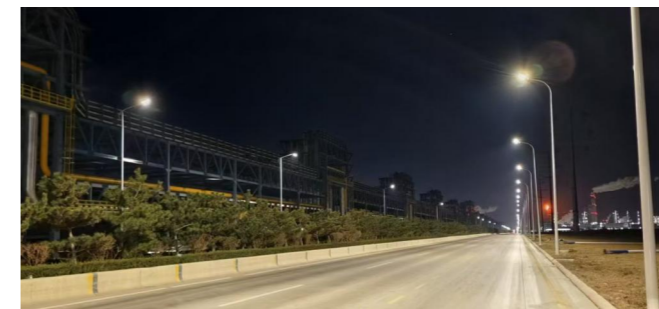
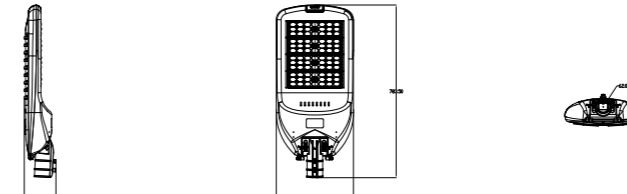


kupu



# Street Lamp Series B-LD200B

Product Size

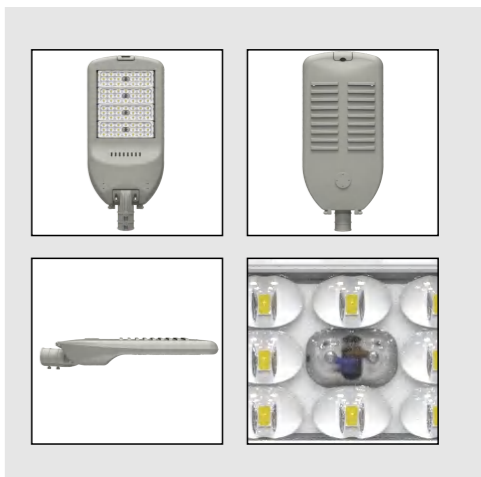


### Technical features



### Technical Data

Item	Street Lamp
Wattage	200W
Light source	7070
Wattage	
IK Rating	IP66
Input voltage	AC110-220V
Cable gland	
Optics	150x75°
Material	ADC12 die-cast aluminum + high borosilicate tempered glass lens
Total weight	8.2 KG
Package dimensions	L365xW180xH805

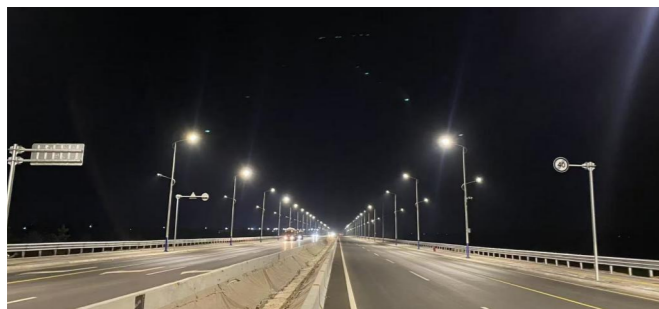
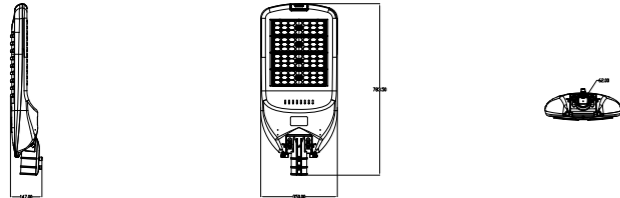


kupu



## Street Lamp Series B-LD240B

Product Size

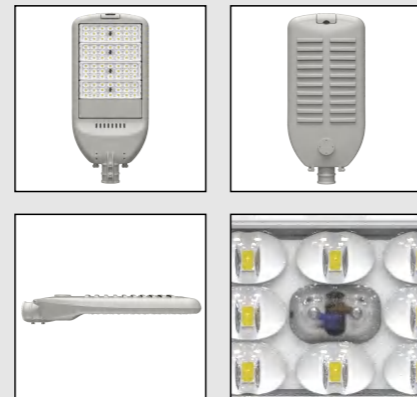


### Technical features



### Technical Data

Item	Street Lamp
Wattage	240W
Light source	7070
Wattage	
IK Rating	IP66
Input voltage	AC110-220V
Cable gland	
Optics	150x75°
Material	ADC12 die-cast aluminum + high borosilicate tempered glass lens
Total weight	8.2 KG
Package dimensions	L365xW180xH805

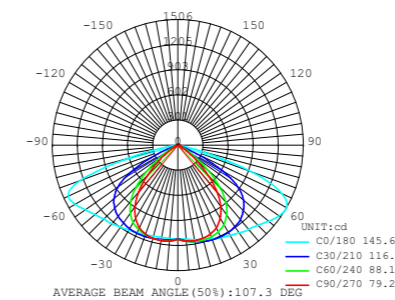
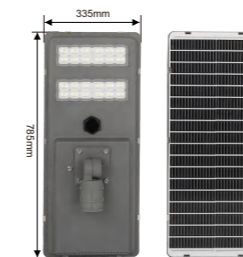


kupu

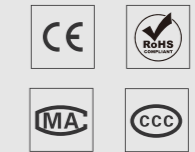


## Solar Street Light KUPU-TER-F40A

Product Size



### Technical features



### Technical Data

Product Name	Solar Street Light
Power	40W
Solar panel	6V/40W Monocrystal
Battery	3.2V /45Ah New LiFeCoPO4
Lamp size	785x335x150mm
Solar panel Size	780x330x3mm
Solar Controller	3.2V/20W PWM
Lamp material	Aluminium
Working mode	light /microwave/radar induction
Full Charge time	6-8 hours
Lighting time	3-4nights
Luminous efficiency	≥200lm/W
Install height	4-5meters
Weight	7.5 kgs
LED Chips	5054/48pcs
Packing size	84x17.5x37.5cm

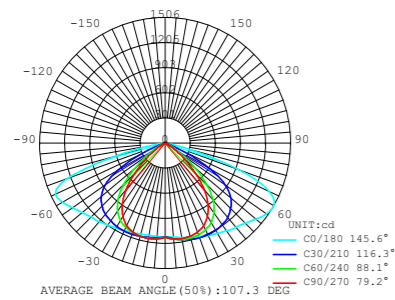
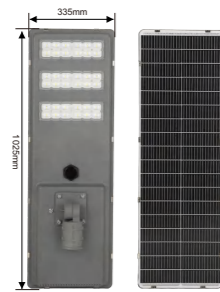


kupu



## Solar Street Light KUPU-TER-F60A

Product Size

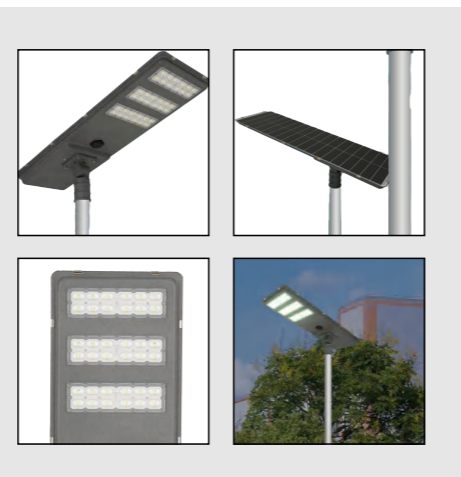


### Technical features



### Technical Data

Product Name	Solar Street Light
Power	60W
Solar panel	18V/60W Monocrystal
Battery	12.8V / 15Ah New LiFeCoPO4
Lamp size	1025×335×150mm
Solar panel Size	1020×330×3mm
Solar Controller	12.8V/30W PWM
Lamp material	Aluminium
Working mode	light /microwave/radar induction.
Full Charge time	6-8 hours
Lighting time	3-4nights
Luminous efficiency	≥200lm/W
Install height	5-6meters
Weight	9.5 kgs
LED Chips	5054/72pcs
Packing size	108×17.5×37.5cm

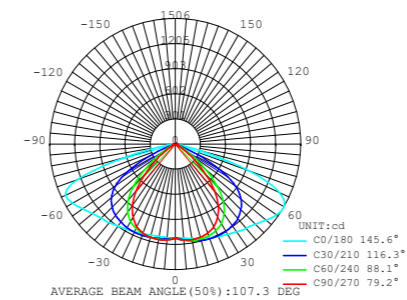
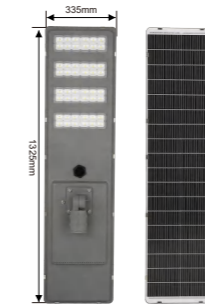


kupu



## Solar Street Light KUPU-TER-F80A

Product Size



### Technical features



### Technical Data

Product Name	Solar Street Light
Power	80W
Solar panel	18V/80W Monocrystal
Battery	12.8V / 18Ah New LiFeCoPO4
Lamp size	1325×335×120mm
Solar panel Size	1320×330×3mm
Solar Controller	12.8V/40W PWM
Lamp material	Aluminium
Working mode	light /microwave/radar induction
Full Charge time	6-8 hours
Lighting time	3-4nights
Luminous efficiency	≥200lm/W
Install height	6-7meters
Weight	9.5 kgs
LED Chips	5054/96pcs
Packing size	139×17.5×37.5cm

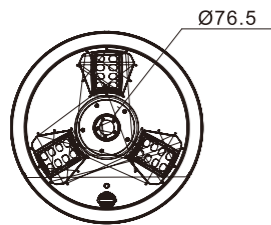
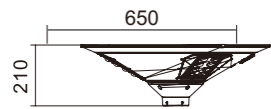


kupu

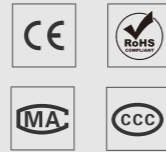


## Solar Street Light KUPU-TER-Y40

Product Size



### Technical features



### Technical Data

Product Name	Solar Garden Light
Power	40W
Solar panel	6V/40W Monocrystal
Battery	3.2V /42Ah New LiFeCoPO4
Lamp size	650×650×210mm
Solar panel Size	640×640×3mm
Controller	3.2V/20W PWM
Lamp Material	Aluminium
Working mode	light / microwave/radar induction
Full Charge time	6-8 hours
Lighting time	18-20hrs
Luminous efficiency	≥200lm/W
Install height	3-4 meters
Net Weight	6.9 kgs
Gross Weight	8.6kgs
LED Chips	5054/96pcs
Packing size	69×69×17.5cm

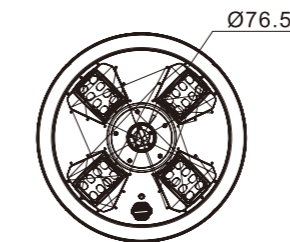
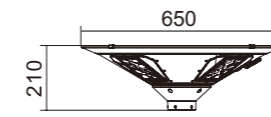


kupu



## Solar Street Light KUPU-TER-Y50

Product Size



### Technical features



### Technical Data

Product Name	Solar Garden Light
Power	50W
Solar panel	18V/50W Monocrystal
Battery	12.8V /12Ah New LiFeCoPO4
Lamp size	650×650×210mm
Solar panel Size	640×640×3mm
Controller	12.8V/30W PWM
Lamp Material	Aluminium
Working mode	light / microwave/radar induction
Full Charge time	6-8 hours
Lighting time	18-20hrs
Luminous efficiency	≥200lm/W
Install height	4-5 meters
Net Weight	7.1 kgs
Gross Weight	8.8kgs
LED Chips	5054/96pcs
Packing size	69×69×17.5cm

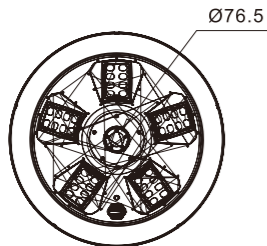


kupu

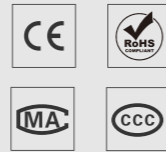


## Solar Street Light KUPU-TER-Y60

Product Size



### Technical features



### Technical Data

Product Name	Solar Garden Light
Power	60W
Solar panel	18V/60W Monocrystal
Battery	12.8V / 18Ah New LiFeCoPO4
Lamp size	740×740×230mm
Solar panel Size	730×730×3mm
Controller	12.8V/40W PWM
Lamp Material	Aluminium
Working mode	light /microwave/radar induction
Full Charge time	6-8 hours
Lighting time	18-20hrs
Luminous efficiency	≥200lm/W
Install height	5-6 meters
Net Weight	9.3 kgs
Gross Weight	11.5 kgs
LED Chips	5054/160pcs
Packing size	78×78×18cm

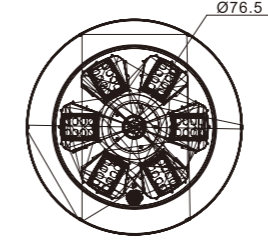
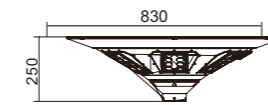


kupu

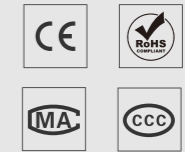


## Solar Street Light KUPU-TER-Y80

Product Size



### Technical features



### Technical Data

Product Name	Solar Garden Light
Power	80W
Solar panel	18V/80W Monocrystal
Battery	12.8V / 24Ah New LiFeCoPO4
Lamp size	830×830×250mm
Solar panel Size	820×820×3mm
Controller	12.8V 50W MPPT
Lamp Material	Aluminium
Working mode	light /microwave/radar induction
Full Charge time	6-8 hours
Lighting time	18-20hrs
Luminous efficiency	≥200lm/W
Install height	7-8meters
Net Weight	11.4kgs
Gross Weight	13.9kgs
LED Chips	5054/192pcs
Packing size	85×85×19cm

