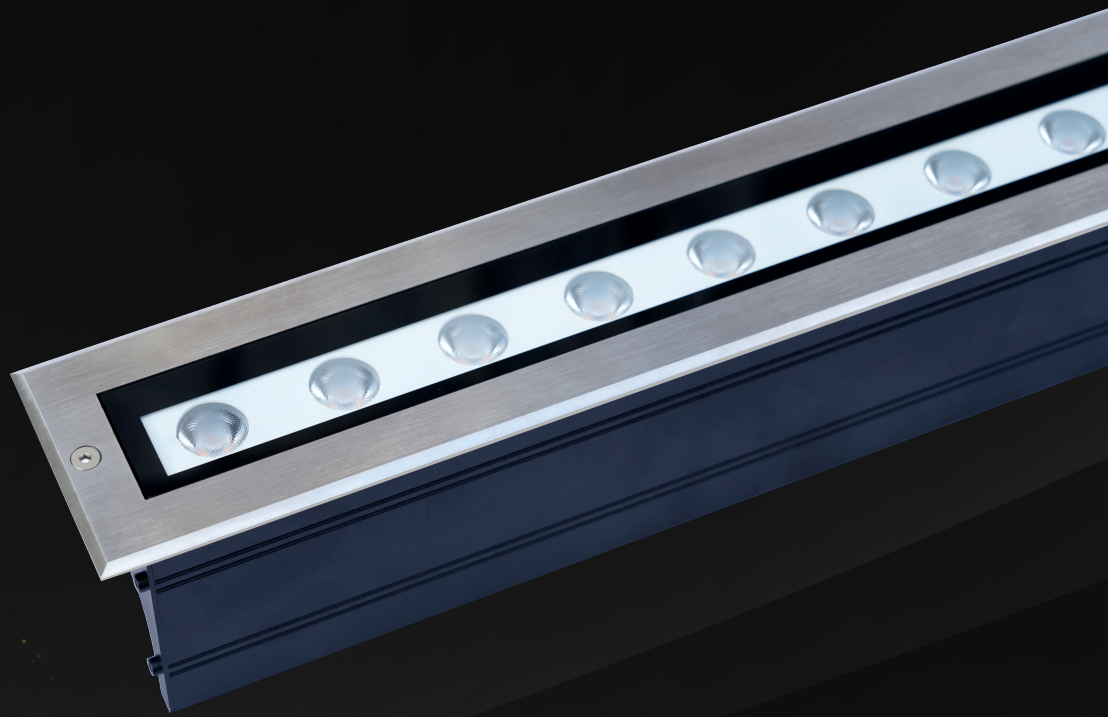


kupu

STRIP BURIED LIGHT



2026

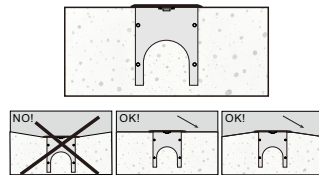
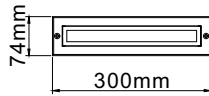
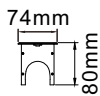
www.kupuled.com



LINEAR EMBEDDED GROUND LIGHT-74

Outdoor linear embedded lighting fixture, with a length of 300 millimeters, using 6063 high corrosion resistant extruded aluminum as the bottom joint, with a 304 stainless steel finish, equipped with an 8MM thick tempered glass panel that is impact resistant and scratch resistant. Equipped with special customized optical technology, the light output is uniform and soft, and the light spot transitions naturally.

Installation Instructions



light source	light beam options	lumen output (lm)	lumin. efficacy (lm/w)
3000 K warm-white			
high-power led	26°	853	138
high-power led	32°	919	148
high-power led	52°	902	145
high-power led	60°	835	57

Technical features



Available on request



Technical Data

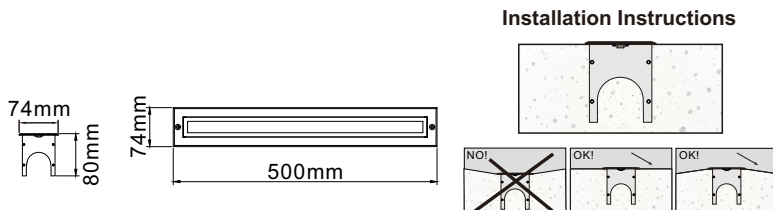
Item	KUPU-DM-300-6W
Wattage	6W
Light source	Cree12x0.5W
Wattage	IP67
IK Rating	IK09
Input voltage	DC24V
Cable gland	Cable 2 * 1mm ²
Optics	26°/32°/52°/60°
Material	The bottom is made of 6063 high corrosion resistant extruded aluminum, and the surface is made of 304 stainless steel, equipped with 8MM tempered glass.
Total weight	1.3 KG
Package dimensions	320 x 82 x 85 mm





LINEAR EMBEDDED GROUND LIGHT-74

Outdoor linear embedded lighting fixture, with a length of 500 millimeters, using 6063 high corrosion resistant extruded aluminum as the bottom joint, with a 304 stainless steel finish, equipped with an 8MM thick tempered glass panel that is impact resistant and scratch resistant. Equipped with special customized optical technology, the light output is uniform and soft, and the light spot transitions naturally.



light source	light beam options	lumen output (lm)	lumin. efficacy (lm/w)
3000 K warm-white			
high-power led	26°	1647	130
high-power led	32°	1772	139
high-power led	52°	1729	138
high-power led	60°	1575	125

Technical features



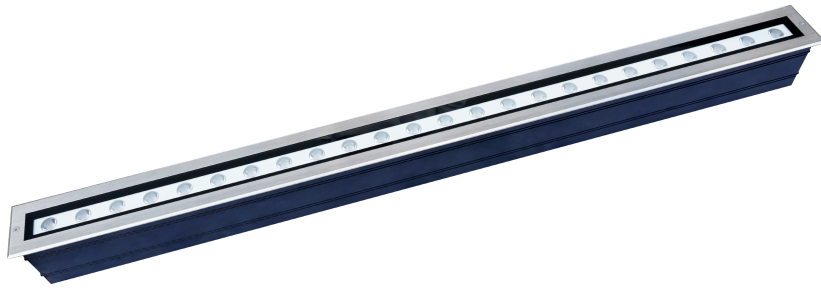
Available on request



Technical Data

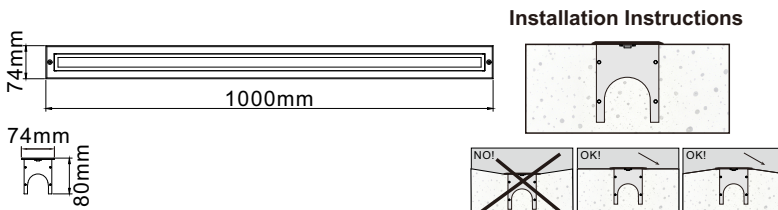
Item	KUPU-DM-500-12W
Wattage	12W
Light source	Cree24x0.5W
Wattage	IP67
IK Rating	IK09
Input voltage	DC24V
Cable gland	Cable 2 * 1mm ²
Optics	26°/32°/52°/60°
Material	The bottom is made of 6063 high corrosion resistant extruded aluminum, and the surface is made of 304 stainless steel, equipped with 8MM tempered glass.
Total weight	2.2 KG
Package dimensions	520 x 82 x 85 mm





LINEAR EMBEDDED GROUND LIGHT-74

Outdoor linear embedded lighting fixture, with a length of 1000 millimeters, using 6063 high corrosion resistant extruded aluminum as the bottom joint, with a 304 stainless steel finish, equipped with an 8MM thick tempered glass panel that is impact resistant and scratch resistant. Equipped with special customized optical technology, the light output is uniform and soft, and the light spot transitions naturally.



light source	light beam options	lumen output (lm)	lumin. efficacy (lm/w)
3000 K warm-white			
high-power led	26°	2948	125
high-power led	32°	1349	134
high-power led	52°	3263	136
high-power led	60°	2858	118

Technical features



Available on request



Technical Data

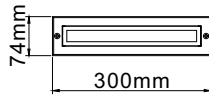
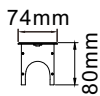
Item	KUPU-DM-1000-24W
Wattage	24W
Light source	Cree48x0.5W
Wattage	IP67
IK Rating	IK09
Input voltage	DC24V
Cable gland	Cable 2 * 1mm ²
Optics	26°/32°/52°/60°
Material	The bottom is made of 6063 high corrosion resistant extruded aluminum, and the surface is made of 304 stainless steel, equipped with 8MM tempered glass.
Total weight	4.2 KG
Package dimensions	1020 x 82 x 85 mm



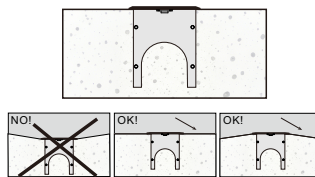


LINEAR EMBEDDED GROUND LIGHT-74

Outdoor linear embedded lighting fixture, with a length of 300 millimeters, using 6063 high corrosion resistant extruded aluminum as the bottom joint, with a 304 stainless steel finish, equipped with an 8MM thick tempered glass panel that is impact resistant and scratch resistant. Equipped with special customized optical technology, the light output is uniform and soft, and the light spot transitions naturally.



Installation Instructions



light source	light beam options	lumen output (lm)	lumin. efficacy (lm/w)
3000 K warm-white			
high-power led	26°	1038	116
high-power led	32°	1245	137
high-power led	52°	1176	131
high-power led	60°	1053	118

Technical features



Available on request



Technical Data

Item	KUPU-DM-300-9W
Wattage	9W
Light source	Cree12x0.75W
Wattage	IP67
IK Rating	IK09
Input voltage	DC24V
Cable gland	Cable 2 * 1mm ²
Optics	26°/32°/52°/60°
Material	The bottom is made of 6063 high corrosion resistant extruded aluminum, and the surface is made of 304 stainless steel, equipped with 8MM tempered glass.
Total weight	1.3 KG
Package dimensions	320 x 82 x 85 mm

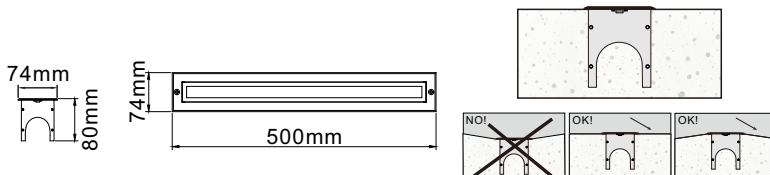




LINEAR EMBEDDED GROUND LIGHT-74

Outdoor linear embedded lighting fixture, with a length of 500 millimeters, using 6063 high corrosion resistant extruded aluminum as the bottom joint, with a 304 stainless steel finish, equipped with an 8MM thick tempered glass panel that is impact resistant and scratch resistant. Equipped with special customized optical technology, the light output is uniform and soft, and the light spot transitions naturally.

Installation Instructions



light source	light beam options	lumen output (lm)	lumin. efficacy (lm/w)
3000 K warm-white			
high-power led	26°	2108	116
high-power led	32°	2317	134
high-power led	52°	2232	121
high-power led	60°	2025	111

Technical features



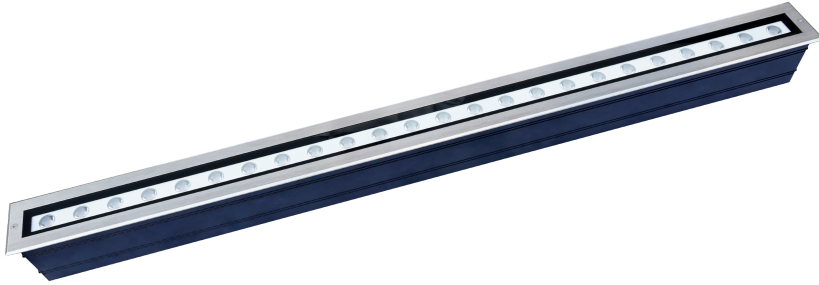
Available on request



Technical Data

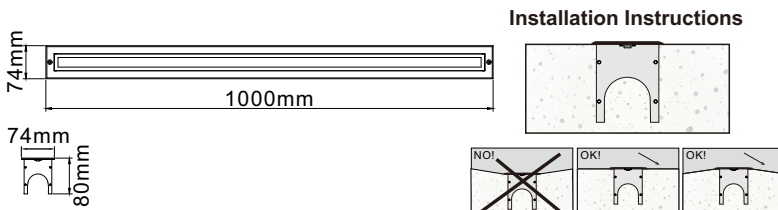
Item	KUPU-DM-500-18W
Wattage	18W
Light source	Cree24x0.75W
Wattage	IP67
IK Rating	IK09
Input voltage	DC24V
Cable gland	Cable 2 * 1mm ²
Optics	26°/32°/52°/60°
Material	The bottom is made of 6063 high corrosion resistant extruded aluminum, and the surface is made of 304 stainless steel, equipped with 8MM tempered glass.
Total weight	2.2 KG
Package dimensions	520 x 82 x 85 mm





LINEAR EMBEDDED GROUND LIGHT-74

Outdoor linear embedded lighting fixture, with a length of 1000 millimeters, using 6063 high corrosion resistant extruded aluminum as the bottom joint, with a 304 stainless steel finish, equipped with an 8MM thick tempered glass panel that is impact resistant and scratch resistant. Equipped with special customized optical technology, the light output is uniform and soft, and the light spot transitions naturally.



light source	light beam options	lumen output (lm)	lumin. efficacy (lm/w)
3000 K warm-white			
high-power led	26°	4375	120
high-power led	32°	4478	129
high-power led	52°	4265	120
high-power led	60°	3699	103

Technical features



Available on request



Technical Data

Item	KUPU-DM-1000-36W
Wattage	36W
Light source	Cree48x0.75W
Wattage	IP67
IK Rating	IK09
Input voltage	DC24V
Cable gland	Cable 2 * 1mm ²
Optics	26°/32°/52°/60°
Material	The bottom is made of 6063 high corrosion resistant extruded aluminum, and the surface is made of 304 stainless steel, equipped with 8MM tempered glass.
Total weight	4.2 KG
Package dimensions	1020 x 82 x 85 mm



kupu

Address: No. 21-1 Yongchang Road, Huacheng Street, Huadu District, Guangzhou

Tel: 020-36933476 / 36963478

Tiktok: ALT1349

Website: www.kupuled.com

E-mail: kp@kupuled.com



Tiktok